

CHAIN DRIVEN ROLLER – MEDIUM DUTY



DESCRIPTION

- Medium Duty Chain Driven Conveyors are ideal for use where live roller conveyor is not needed. Due to the simple design, shorter lengths can be used than with standard belt-driven conveyor. Common applications include being mounted atop a scissor lift or used as a Transfer Car bed.
- Typical Top-of-Roller height is 12" (30.5cm). However, the TOR can be lowered by mounting the motor/reducer outside the conveyor, or can be higher when mounted on sturdy legs.
- Power to the rollers is usually distributed from the center of the conveyor to the primary drive rollers and then transmitted to all remaining driven rollers using #40 roller chain over hardened steel sprockets.

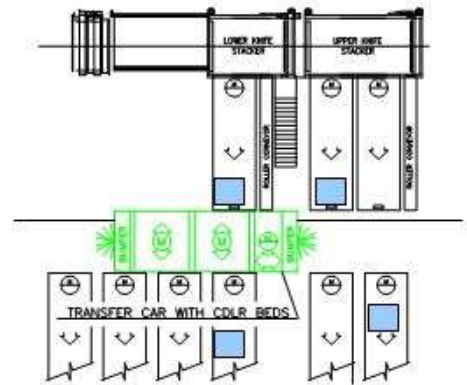
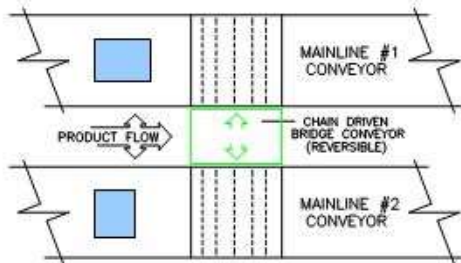
FEATURES

- Powered by a 230V/460V/3PH/60Hz "C" face mounted gear motor with other voltages available. Horsepower varies based on conveyor speed requirement.
- Utilizes heavy-duty 2-1/2" (6.35cm) OD galvanized chain driven and drop-in rollers with solid 11/16" (1.75cm) hex axles mounted in 11/16" (1.75cm) nylon bushings.
- Maximum load capacity of 3,000 lbs. (1,360 kg).
- Sprockets and chains are fully enclosed by removable safety guards.
- Pre-wired safety lockout switch, control panel and operator control console.
- Made using 3" (7.62cm) or 5" (12.7cm) structural steel channel side frames.

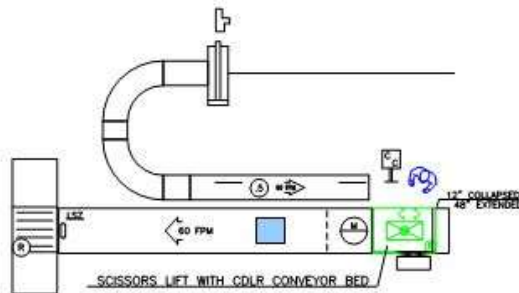
CHAIN DRIVEN ROLLER – MEDIUM DUTY

Example Applications:

CROSS-OVER BRIDGE APPLICATION



TRANSFER CAR BED



SCISSOR LIFT BED

SPECIFICATIONS

Between Frame Widths:	48", 60", 72", 84", 96" (1.2M, 1.5M, 1.8M, 2.1M, and 2.4M)
Lengths:	3'0" through 10'-0" (0.9M through 3.04M) in 3" (0.76M) to 4" (0.1M) increments depending on application.
Minimum Height (TOR):	12" Standard (30.5cm)
Maximum Load Rating:	3,000 lbs. (1,360.8 kg) per unit
Conveyor Speeds:	Standard 40 or 60 FPM (Other conveyor speeds available to suit application)
Motor / Reducer:	
Motor:	'C' Face mounted motor. 230V/460V/3PH/60Hz. Other voltages available as needed. Horsepower varies with the conveyor speed requirement. Full amperage load 1.08 to 2.00 amps (depending on conveyor speed).
Reducer:	Single right-angle worm-type reducer transmitting power directly to the drive rollers.
Product Construction:	
Side Frames:	Rugged 3" (7.62cm) or 5" (12.8cm) structural channel side frames with flat bar welded in for placement of the load-carrying rollers on 3" (7.62cm) centers.
Supports:	Made from structural steel and precision CNC cut and punched components.
Load-Carrying Rollers:	2- 1/2" (6.35cm) OD chain driven and drop-in rollers with 11/16" (1.75cm) solid hex axles with 11/16" (1.75cm) hex bore nylon bushings and driven by #40 roller chain.
Control Options:	
Manual:	Push button operator actuation
Automatic:	Positioning controls with sensors and control software utilizing programmable logic controllers to facilitate fully automatic operation.