

ROUND PIVOT CAR

WITH POWERED LIVE ROLLER BED



DESCRIPTION

- Round Pivot Cars are designed to rotate around a centrally-located floor-mounted pivot pin making it a versatile transfer device at two-, three- or four-way intersections.
- Round Pivot Cars are available with a Powered Live Roller bed utilizing trued rollers to ensure smooth load movement and minimize drive loading or with modular plastic belting to provide a solid load platform and minimize damage to bottom sheets during load transfer.
- Designed for a maximum load rating of 3,000 lbs. (1,361 kg).
- Round Pivot Cars can be operated in automatic or manual mode and are a major link in the mechanized portion of an ACS material handling system.

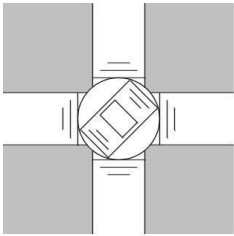
FEATURES

- 1 HP brake motor car drive (Travel / Rotation).
- 1.0 and 1.5 HP variable-speed conveyor drives available.
- Utilizes Powered Live Roller conveyor beds with 2- 1/2" (6.35 cm) OD galvanized rollers containing "Lubed-for-Life" bearings.
- Over-travel sensors provide for accurate car positioning and safe operation.
- Structural channel side frames with structural steel head mechanisms assure long service life.
- Entire assembly made with precision CNC and laser cut components.

ROUND PIVOT CAR *with POWERED LIVE ROLLER BED*

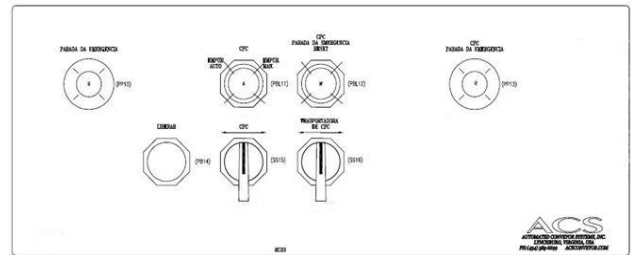


The Round Pivot Car can be equipped with Modular Belting or Powered Live Roller conveyor bed.



Four-way Intersection Illustrated

Typical Operator Console



SPECIFICATIONS

Pivot Car Diameter::	120" (3M), 150" (3.8 M)
Between Frame Bed Widths:	84", Between Frame (2.1m)
Minimum Height:	12" (30 cm) Top of Roller Standard. Other heights available as needed.
Capacities::	
Load Length x Width:	120" (3 M) Diameter Car: 84" (1.8 M) Wide x 84" (1.8 M) Long 150" (3.8 M) Diameter Car: 84" (1.8 M) Wide x 120" (3 M) Long
Structural Load:	1,240 lb. (562 kg) Structural Strength per roll *For 3" (76mm) Centers
Conveyance Load:	3,000 Lbs. (1,361 kg)
Drive Components:	
Conveyor Speeds / HP:	1 HP 40 FPM (17.37 MPM) or 1.5HP 60 FPM (18.29 MPM) Typical
CAR Motor Drive/Rotation:	1 HP Brake Motor, 230V/460V/3PH/60HZ mounted to an adjustable slide plate with chain drive, (Other HP and voltages available as required)
<u>Product Construction:</u>	
Frame:	3" or 5" (76mm or 128 mm) @ 6.7 lbs./ft. (9.084 Nm) Structural Steel
Supports:	Precision CNC and laser cut structural steel components, all welded steel construction
Load Carrying Rollers:	2- 1/2" (6.35 cm) OD Galvanized Steel with 11/16" Hex Axle, Sealed "Lube-for-Life" Bearings
Tension Rollers:	1.9" (4.83 cm) OD Galvanized Steel with 7/16" Spring-loaded Hex Axle, Sealed "Lube-for-Life" Bearings
<u>Control Options:</u>	
Manual:	Pushbutton operator-actuated
Automatic:	Electromechanical sensors (i.e. Photo Eyes, Proximity Sensors) may automatically actuate the conveyor and device to position and transfer the load. Control software utilizing Programmable Controller to facilitate fully automatic operation.