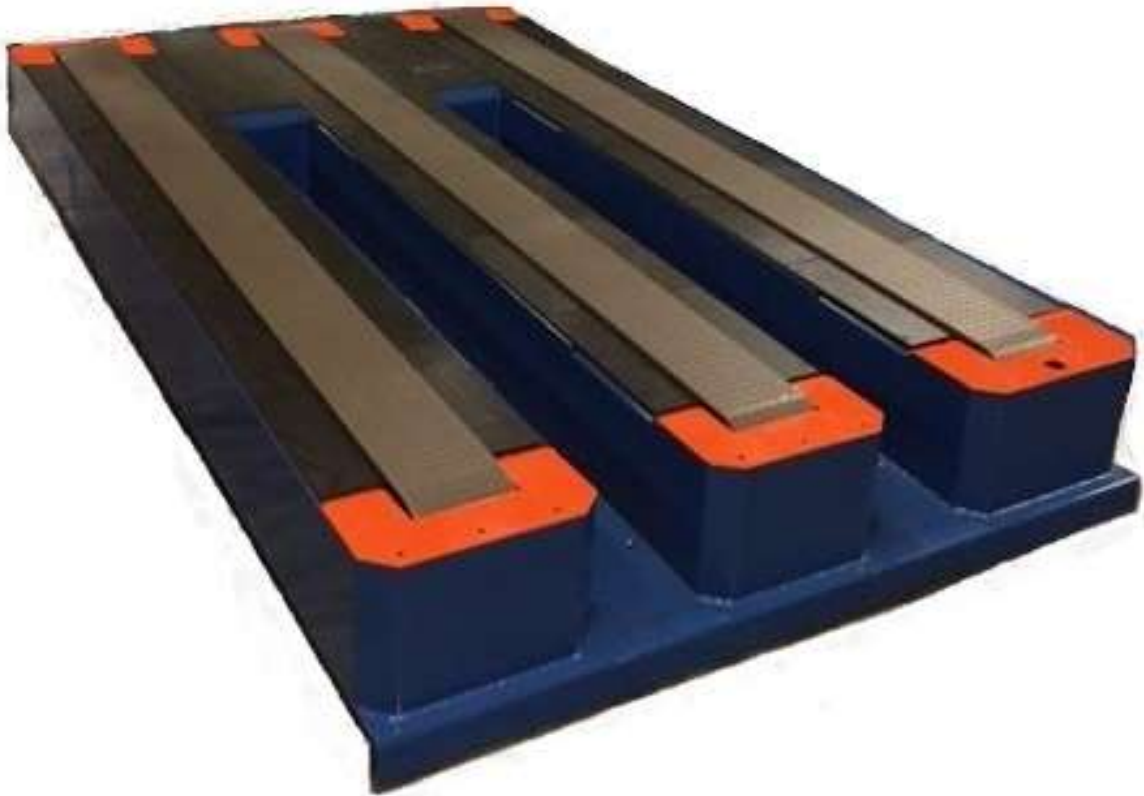


ACS ADVANTAGE: *CONTROLLED TRANSFER* **POWERED FORK TRUCK STATION – MODULAR BELT**



DESCRIPTION

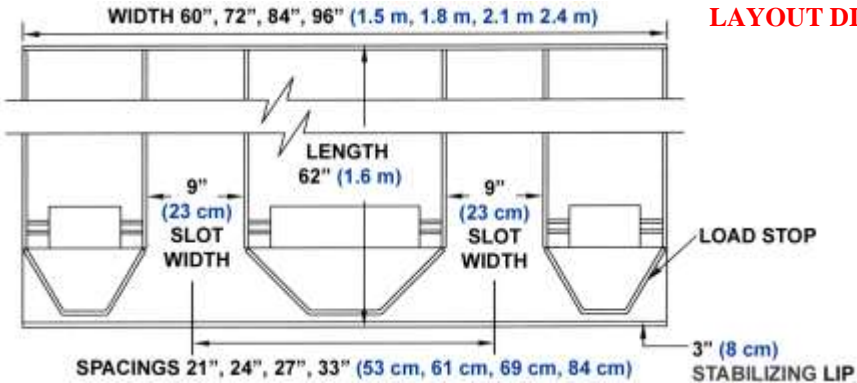
- Fork Truck Stations provide convenient transition areas for fork trucks to safely insert or remove loads on or off conveyors.
- Powered Fork Truck Stations are an excellent option, especially for infeed stations offering more controlled load movement and positioning. Powered stations can be equipped with various types of conveyor tops such as Modular Belt (as shown above), Stedi-Stak, Powered or Non-powered Roller.
- Custom design characteristics can be engineered to meet specific application requirements such as combinations of powered and non-powered fingers, tailored finger widths and spacing, etc.

FEATURES

- Can be used with new or existing ACS conveyors and all competitor's conveyors.
- Configured to align with the top of roller elevation of the adjacent conveyor, eliminating the need for a pit.
- Power train is contained within the conveyor frame to help avoid the possibility of accidental damage or personal injury.
- Welded side frames made with precision CNC plasma cut and punched components.
- Optional 3" (76mm) lip inserted in floor stabilizes the station in case of impact from fork truck.
- Optional rubber bumper on center finger can protect the station from scratching, marring, denting and other forms of damage.

ACS
Automated Conveyor Systems, Inc.

POWERED FORK TRUCK STATION – MODULAR BELT



TYPICAL CONVEYOR OPTIONS

Modular Belt



Stedi-Stak



Powered Roller



Non-powered Roller



Multiple fork truck stations are an option for load sorting or simply to increase the number of units to load or unload at one time.

SPECIFICATIONS – MODULAR BELT

Between Frame Widths:	48", 60", 72" 84" and 96" BF (1.2m, 1.5m, 1.8m, 2.1m and 2.4m)
Module Lengths:	62" Standard (1.6m)
Standard Center Widths:	21", 24", 27" and 33" (533mm, 610mm, 686mm and 838mm)
Slot Width:	Typically, 9" (229mm) Call factory for alternate dimensions
Capacity:	3000 lbs. (1360 kg) Per unit load
Product Construction:	Welded 1/4" (6 mm) structural steel side frames and bottom plate. Additional metal keeper bars are added along the channels to secure the rollers in case of jarring by the fork truck.
Modular Belt:	17- 1/2" Wide (19.05cm) heavy-duty acetal material with pockets on the underside to mate directly with heavy-duty keyed thermoplastic drive sprockets.
Motor/Reducer:	Typically, 2HP Gear Motor 230V/460V/3PH/60Hz (575Volt/3PH/60Hz for Canadian applications)
Conveyor Speeds:	40 or 60 FPM (12.19 or 18.29 MP/M)