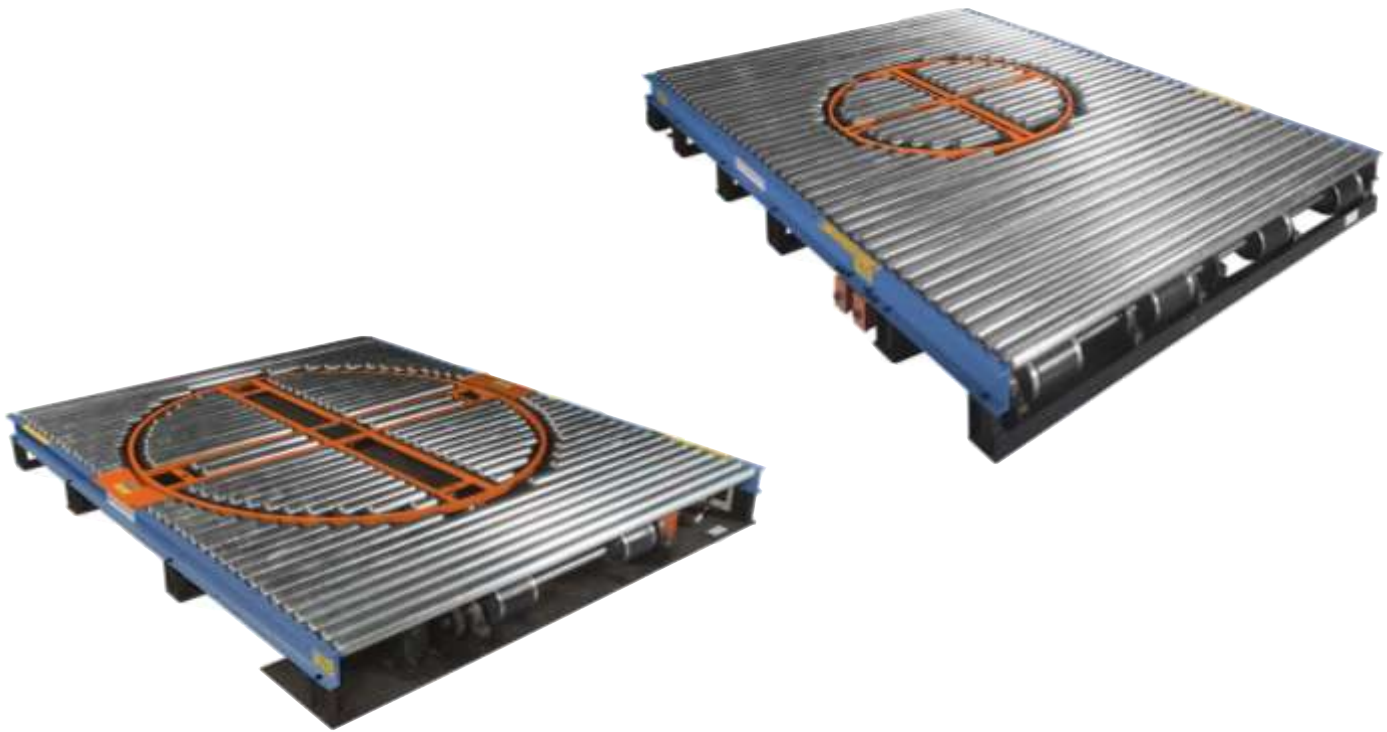


ACS ADVANTAGE: RING TURNTABLES

ORIENTATION CONTROL



DESCRIPTION

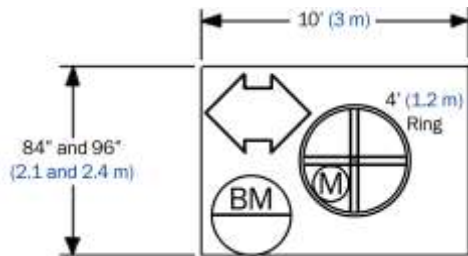
- Ring Turntables lift and rotate loads 90°, 180°, or 270° in either direction. A brake motor controls load position on the conveyor.
- Two ring sizes are available: 48" (1.2M) and 84" (2.1M). Four wheels situated along the circumference support the ring. The 48" (1.2M) ring is driven from the center post. The 84" (2.1M) ring is driven by two of the support wheels.
- Ring Turntables can be operated manually or integrated into an automatic conveyor system. A control console is provided for safety functions, manual operation and selection of automatic modes of control.

FEATURES

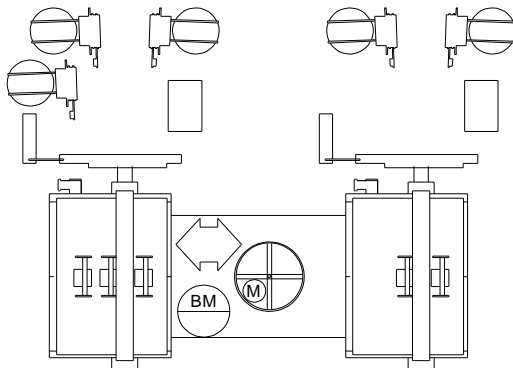
- 1 HP brake motor conveyor drive for accurate load positioning.
- Conveyor rollers inside and outside the ring are driven with a series of 6" (152mm) belts. The belts are powered with a common drive shaft and have individual tension adjustments.
- Pre-wired safety lockout switch, control panel and operator control console
- Completely installed pneumatic system.
- 3,000 lb. (1,361kg) capacity 48" (1.2M) ring.
- 4,000 lb. (1,814kg) capacity 84" (2.1M) ring.
- Made with precision CNC plasma cut and punched components.

RING TURNTABLES

LAYOUT DIMENSIONS (4' RING)

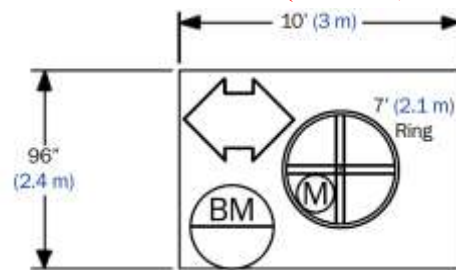


TYPICAL RING TURNTABLE LAYOUT

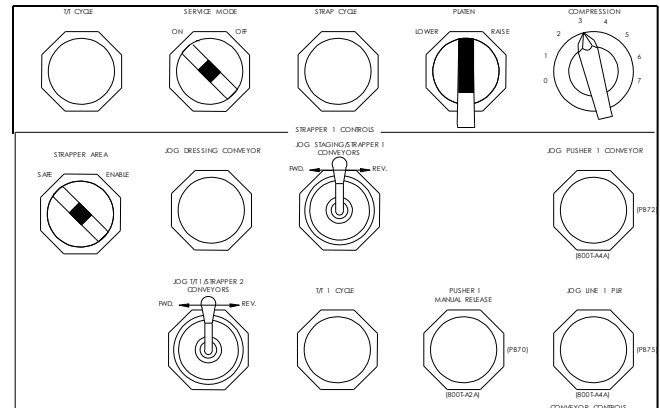


This typical layout illustrates the use of a Ring Turntable for the Strapping System.

LAYOUT DIMENSIONS (7' RING)



TYPICAL CONTROL CONSOLE LAYOUT



The controls for this conveyor are part of the Strapper System Control Console.

SPECIFICATIONS

| | |
|----------------------------------|---|
| Compatible Conveyors: | Roller Conveyor (RC) and Powered Live Roller Conveyor (PLR). |
| Between Frame Widths: | 48" Ring – 84" and 96" Between Frame (1.2M ring— 2.1M and 2.4M) 84" Ring – 96" BF (2.1M ring—2.4M) |
| Lengths: | 8' 0" and 10' 0" (2.4m and 3m) |
| Top of Roller Elevation: | 12" Standard (305mm) |
| Load Rating: | 48" (1.2M) ring: 3,000 lbs. per unit. 84" (2.1M) ring: 5,000 lbs. per unit (2,268kg per unit) |
| Load Height: | Three times the smallest base dimension: 18" (46mm) minimum. or 72" (1.8M) maximum |
| Minimum Air Requirements: | 90 PSI (6.2 BAR) Clean, Dry Plant Air at The Drops |
| Product Construction: | Rugged 5" (128mm) structural channel side frames. Floating frame is welded steel construction. |
| Drive Components: | The 48" (1.2M) ring drive uses a 1/3 HP motor. The 84" (2.1M) ring drive has a 3/4 HP motor. Conveyor drive is "C" Face mounted motor and a single right-angle worm-type reducer on a slide base transmitting power through single #80 roller chain and sprockets. 24-Volt Controller available at no additional cost. |
| Rollers: | 3" (76mm) schedule 40 pipe chain-driven rollers with 1" (25mm) diameter shafts mounted in flange bearings placed on 4" (102mm) roll centers. Corrosion-resistant galvanized steel. |