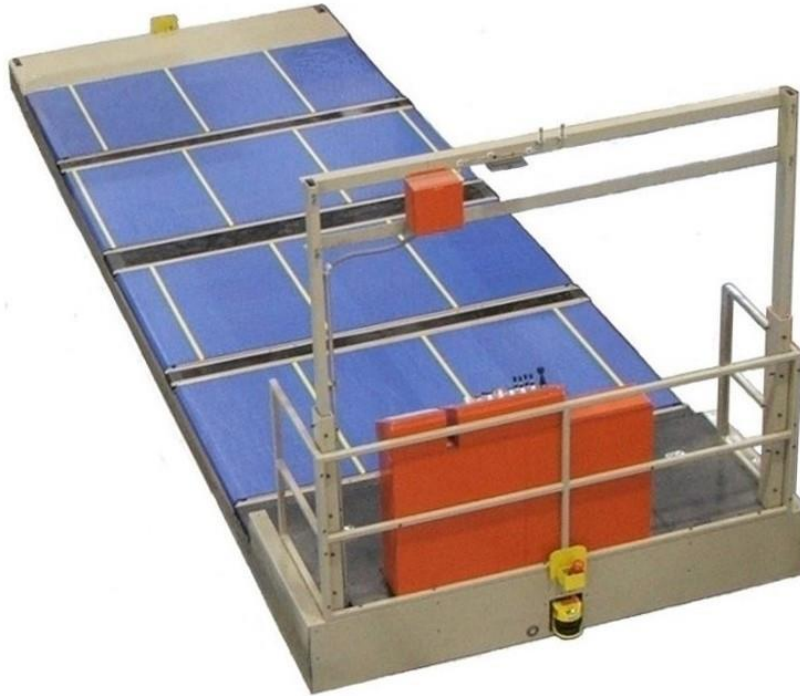


TRANSFER CAR

With Stedi-Stak Beds



DESCRIPTION

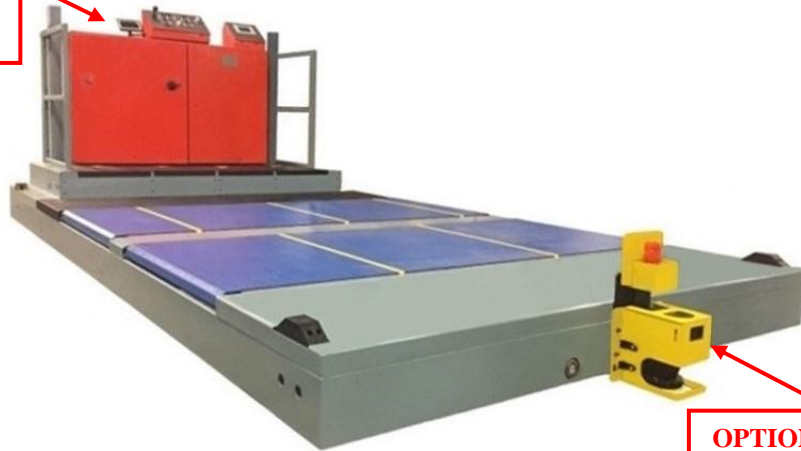
- *Transfer Cars move loads from conveyor to conveyor in an aisle. The car travels in the aisle, guided by an in-floor track. Transfer Cars are typically equipped with two belt-powered conveyors that operate independently or in tandem, or with four conveyor beds as illustrated above. TCAR's can also be equipped with turning posts to rotate loads once onboard.*
- *Cars are of one-piece construction. The frame is flexible enough to follow the contour of the floor, yet rigid enough to transfer the weight of the load to the drive and braking wheels.*
- *Transfer Cars can be operator-controlled or integrated into an automatic conveyor system. A control console is provided for safety function, manual operation, and selection of automatic modes of operation.*

FEATURES

- *Equipped with 2.0 HP variable-speed AC conveyor drives.*
- *10 HP variable-speed AC car drive with brake.*
- *Bumper and brake system permit standard 200 FPM (661 MPM) operation.*
- *Unmanned operation in an enclosed aisle can travel up to 350 FPM (107 MPM).*
- *Optional backup camera system available.*
- *Encoder systems for both car positioning and load measuring.*
- *Onboard programmable logic controller and diagnostic system.*

TRANSFER CAR

**FULL COLOR 7"
MONITOR INCLUDED
WITH OPTIONAL BACKUP
CAMERA SYSTEM**



**OPTIONAL BACKUP
CAMERA SYSTEM
INSTALLED**

SPECIFICATIONS

Between Frame Bed Widths:	1-4 Conveyor Beds 60", 72", 84" or 96" (1.5M, 1.8M, 2.1M, or 2.4M)		
Conveyor Bed Types:	Stedi-Stak Bed(s), Roller Conveyor (RC), and Powered Live Roller Conveyor (PLR)		
Car/Conveyor Lengths:	10'-0" (3M) Standard. Other lengths available dependent upon number of conveyor beds and size(s).		
Top of Roller Elevation:	12" (30.48cm) Standard		
Maximum Load Sizes:	Lengths: 10'-0" (3M) – 108" (2.75M) 8'-6" (2.6M) – 90" (2.75M) 8'-0" (2.4M) – 84" (2.1M)	Widths: Two 96" (2.4M) Beds – 203" (5.1M) Two 84" (2.1M) Beds – 179" (4.5M) Two 72" (1.8M) Beds – 155" (3.9M) Two 60" (3.3M) Beds – 131" (3.3M)	
Load Rating:	10,000 lb (4,536 kg)		
Product Construction:	Chassis Outer Frame:	3/4" x 4" x 8"	(19 x 102 x 203mm)
	Cross Members	1/2" x 4" x 8"	(15 x 102 x 203mm)
	Wheel Boxes:	3/4" x 10 x 19 1/2"	(19 x 152mm)
	Wheel Box Support Angle:	1/2" x 4" x 8"	(15 x 102 x 203mm)
	Load Bearing Wheels:	3" W x 8" Diameter	(76 x 203mm)
	Drive Wheels:	5" W x 14 1/2" Diameter	(128 x 368mm)
Drive Components:	10 HP brake motor for speeds from 0 – 350 FPM (0-107 MPM). The 2- 15/16" (75mm) drive shaft is driven using double 80# roller chain. Components are located under the drive end deck plate which is hinged for ease of maintenance. 24-Volt Controls standard. 110-Volt controls available.		
Safety Package:	All cars equipped with laser proximity bumpers on both ends and warning system consisting of a buzzer and flashing light. Optional backup camera system is also available.		